

# Rock chip sampling confirms high grade quartz vein 500m long and up to 20m wide



Castle Minerals Limited (ASX:CDT) is pleased to advise that further sampling at its Wa project has confirmed high grade results from a 500m long outcropping laminated pyritic quartz vein.

Forty four rock chip samples of the laminated quartz vein have now been collected reporting an average grade of 13.2g/t gold.

Recent sampling included two channel samples across the interpreted true width of the vein that averaged

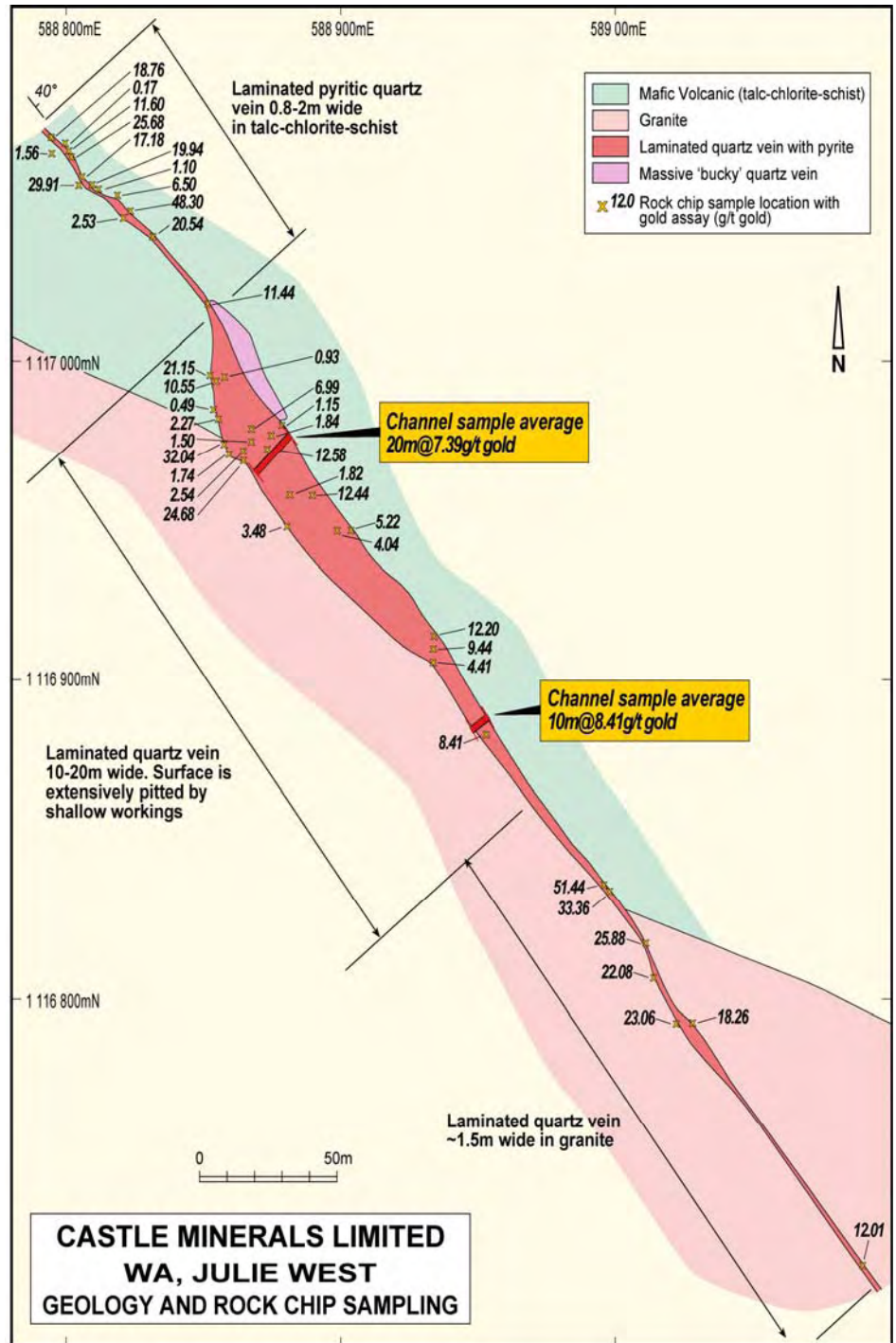
**20m @ 7.39 g/t gold and  
10m @ 8.41 g/t gold.**

The vein outcrops (or is exposed in shallow workings) for over 500m.

The vein reports as a single continuous laminated pyritic quartz vein. Vein contacts are well defined and true width generally varies from ~0.8-2 m, however in the central part of the exposure a 200m section along a granite/mafic volcanic contact exposes vein widths up to 20m. This area hosts extensive shallow pits from recent artisanal mining activity.

Castle Managing Director Mike Ivey said "our recent visit has confirmed the continuity and tenor of the quartz vein at surface. The laminated and pyritic nature of the vein was a positive surprise as was the width of the vein in the central area. This prospect now offers excellent potential for high value near surface mineralisation.

Drill testing to confirm the grade and vein continuity at depth is now a priority and is planned for the end of the current wet season (~November). "



The zone of quartz veining is interpreted as being along the same structure as the neighbouring Julie gold deposit (5km to the east). The Julie deposit is an east-west trending zone with shear-hosted gold mineralisation occurring along a granite/basalt contact. Crew Gold (CRU:TSX) has reported an unclassified (inferred) resource of approximately 3.3 million tonnes for the top 30m of the Julie target, containing about 300,000 oz gold.<sup>1</sup>

**Background**

The 8,200 km<sup>2</sup> Wa project was acquired from Newmont Ghana Gold Limited (NGGL) in November 2007. An extensive sampling and mapping program was undertaken in February and March 2008 with 2,269 samples collected from a variety of areas. This work has produced a number of highly anomalous target areas that require further investigation and sampling. The Julie West area is the first such area to be investigated by Castle Minerals.



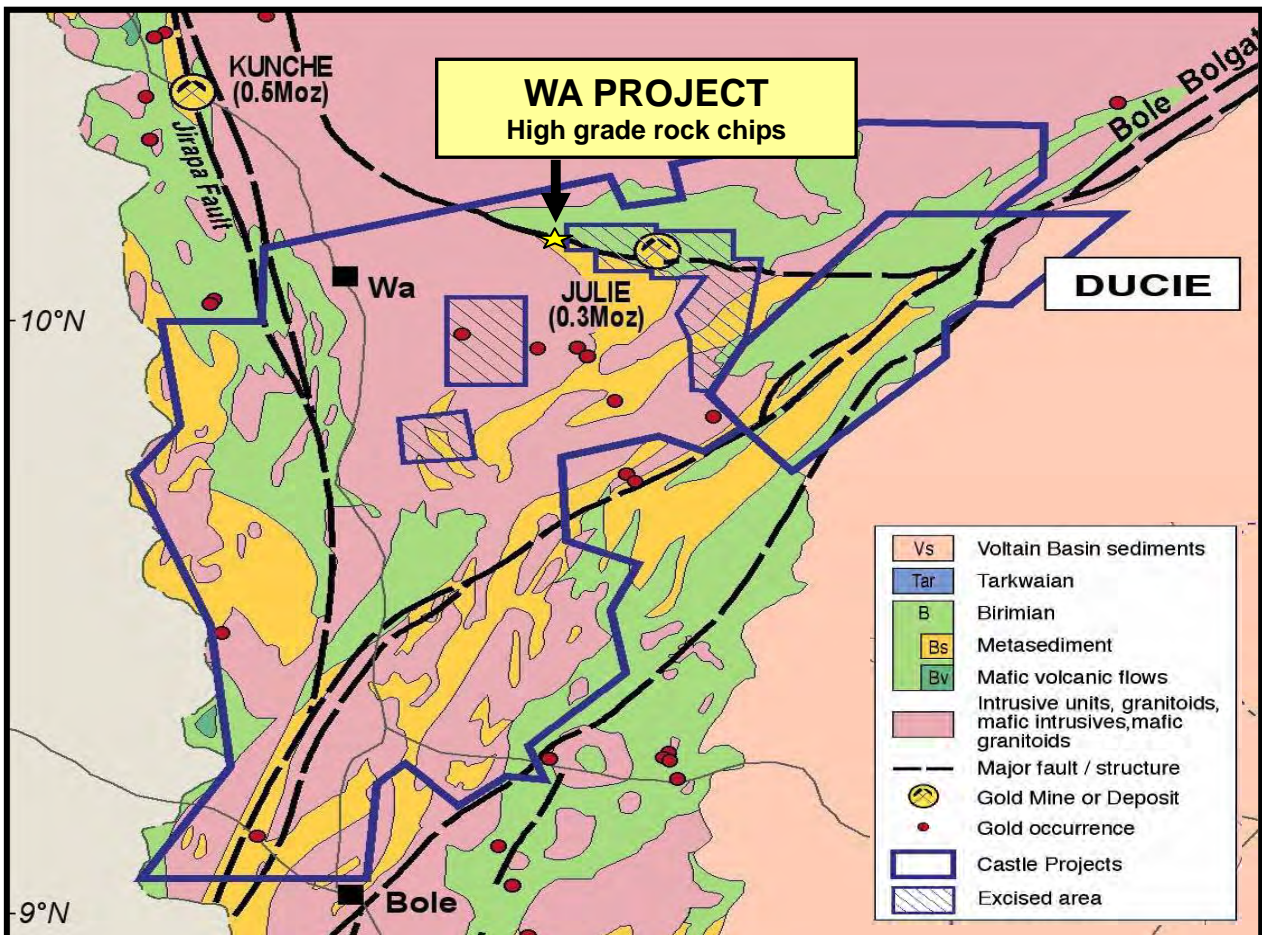
*Laminated quartz vein at Julie West*

**Other Projects**

A 24 hole reverse circulation drilling program has just been completed at the Company’s Akoko North Prospect. First results are expected in approximately three weeks.

For further information please contact:

Michael Ivey  
 Managing Director & CEO  
 +618 9322 7018 or 0419 868 787



<sup>1</sup> Crew Gold Corporation website



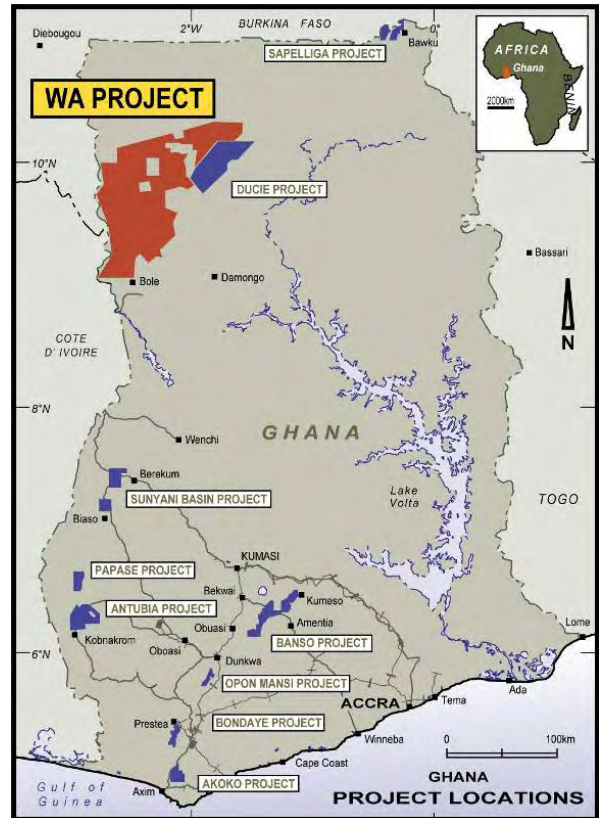
*Extensive shallow pits have been dug over the outcropping quartz vein*



*Photomosaic over part of the quartz vein where it reaches 20m width*



*Artisanal working in quartz. The quartz vein assayed 23.13g/t gold.*



*Castle project locations in Ghana*



*Artisanal working on a north dipping laminated vein - the vein assayed 17.07g/t gold*

