

2 May 2008

Gold Discovery at Akoko North



Castle Minerals Limited (ASX:CDT) is pleased to announce that first pass drilling at Akoko North has intersected significant open ended shallow gold mineralisation over 1,000m of strike.

Five, 200m spaced drill fences were completed with **significant gold mineralisation intersected on all lines. The mineralised zone is open in all directions.**

Intercepts of note include:

2m	@	2.66g/t	gold from 15m	(ANRC 04)
17m	@	2.29g/t	gold from 5m	(ANRC 06)
18m	@	2.17g/t	gold from 3m	(ANRC 07)
10m	@	1.11g/t	gold from 42m	(ANRC 07)
11m	@	6.65g/t	gold from 50m	(ANRC 08)
10m	@	1.50g/t	gold from 40m	(ANRC 13)*
20m	@	0.80g/t	gold from 30m	(ANRC 18)*

Castle Managing Director Mike Ivey said "these results are very promising; consecutive intercepts at 200m line spacing suggests a large gold system may exist. The near surface results have obvious economic potential whilst the deeper intercept in hole ANRC 08 (11m @ 6.65 g/t) is from a sulphide zone that provides promise of high grade primary gold mineralisation. This is the first drill program at Akoko North and as well as following up these results we have numerous other targets that require testing."

Mineralisation is hosted by lateritized to strongly altered fresh basalts and andesites with variable amounts of quartz veining, silicification and pyrite.

A program of infill drilling is being prepared.

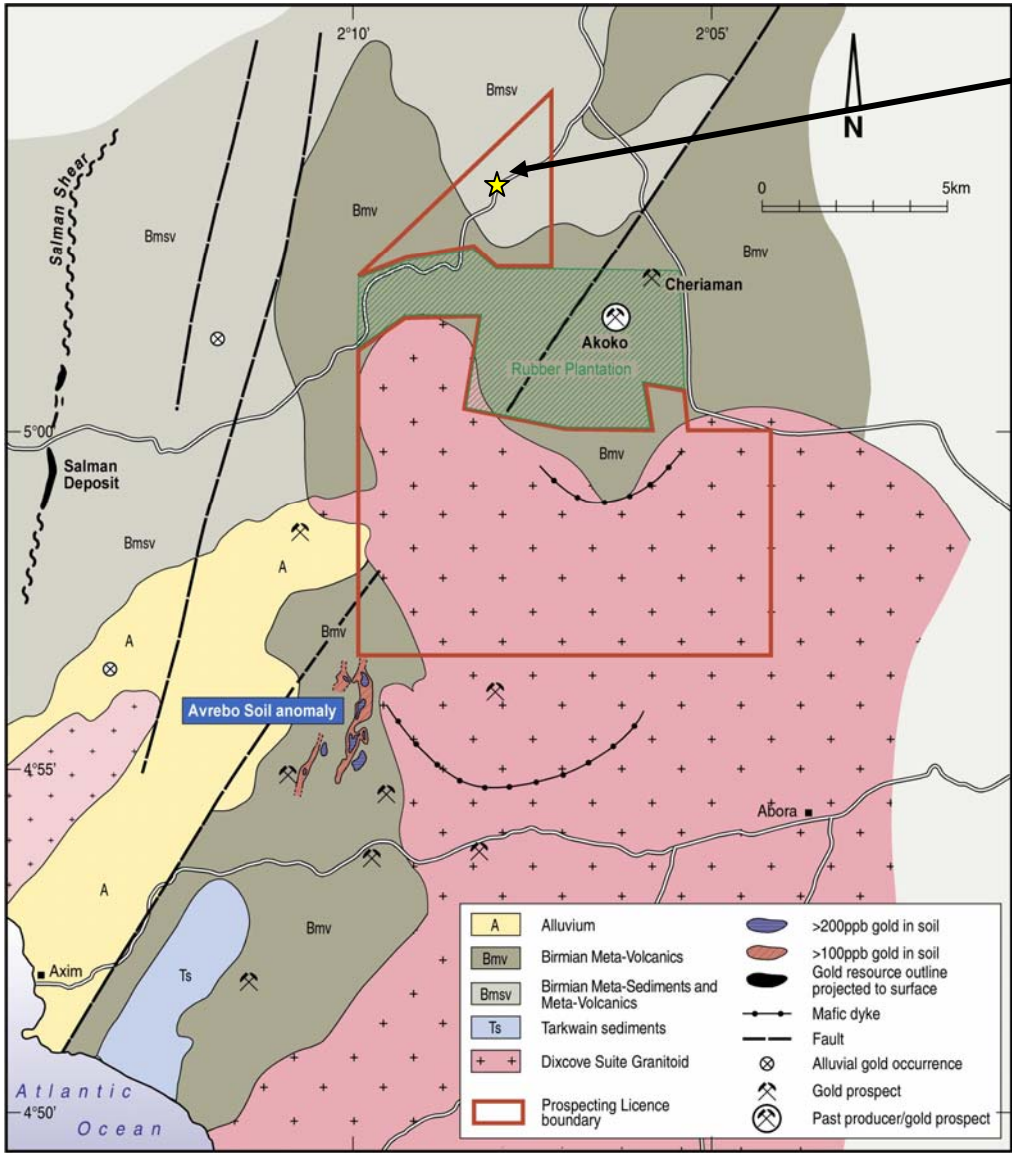
Background

The 20 hole reverse circulation drilling program was designed to test a well defined 1.5km long (+250ppb gold) gold in soil anomaly and represents the first ever drilling in this area. The northern half of this anomaly contains numerous historic prospecting pits and shafts over a +600m x 75m area. The area has excellent access being 600m west of an all weather gravel road and 25km south of the large mining town of Tarkwa. The Akoko North prospect is situated on a low ridge. Minor subsistence farming is carried out but the nearest village is at Esaaman approximately 8km to the southeast.

The Akoko Project consists of one granted Prospecting Licence located in the Ashanti gold belt ~10 km east of Adamus Resources' Salman gold project. Adamus has reported a resource of 1.97 Moz for their combined Salman/Anwia resource.

*5m composite assays, 1m splits pending

Akoko North Gold Discovery



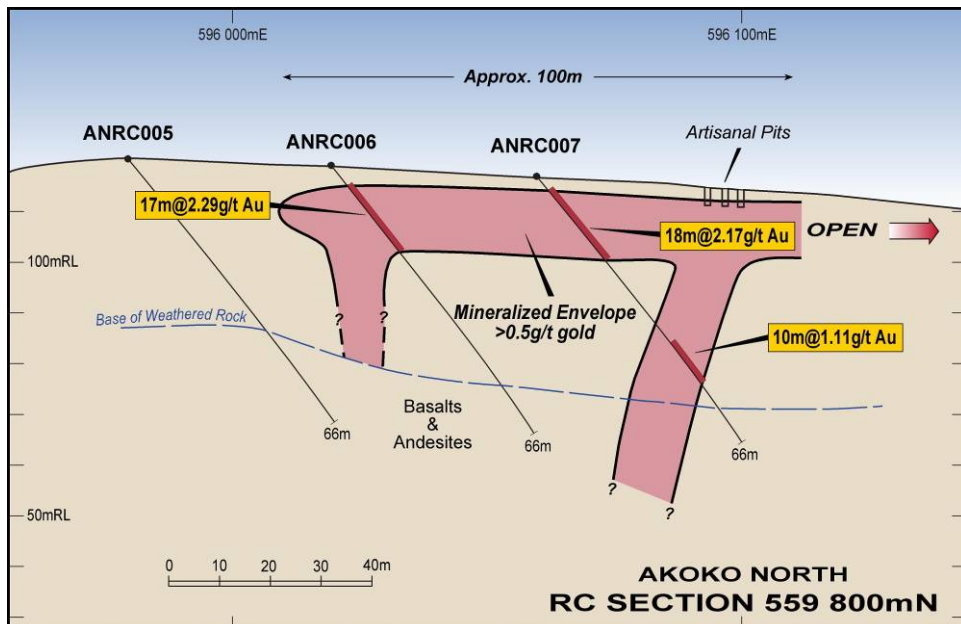
**CASTLE MINERALS LIMITED
AKOKO PROJECT
REGIONAL GEOLOGY**



Laterite with quartz on drill line



Reverse circulation drilling at Akoko North



Mineralisation intersected on all lines on 200m spaced drill fences...

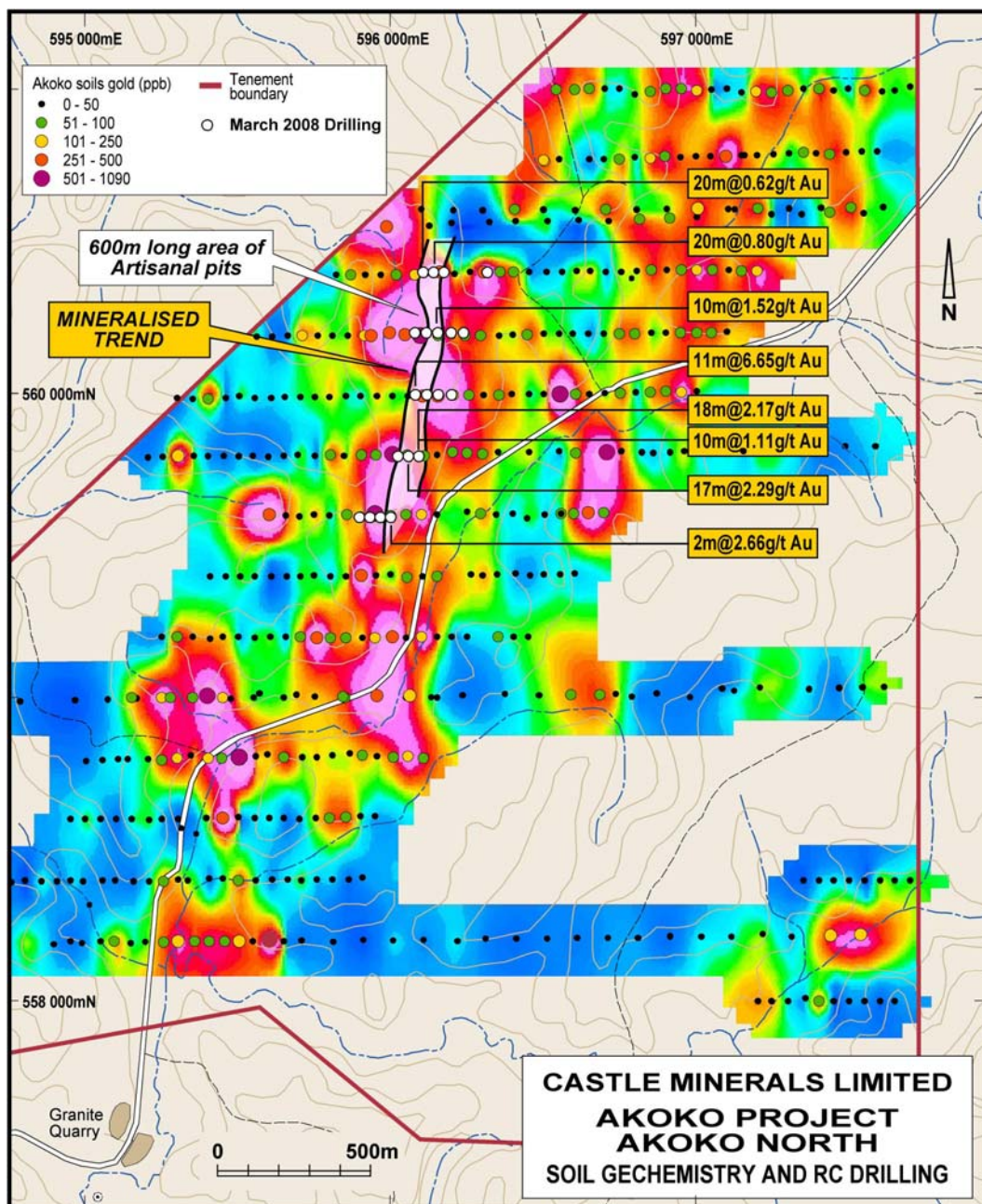
Lateritic and primary gold intersected...

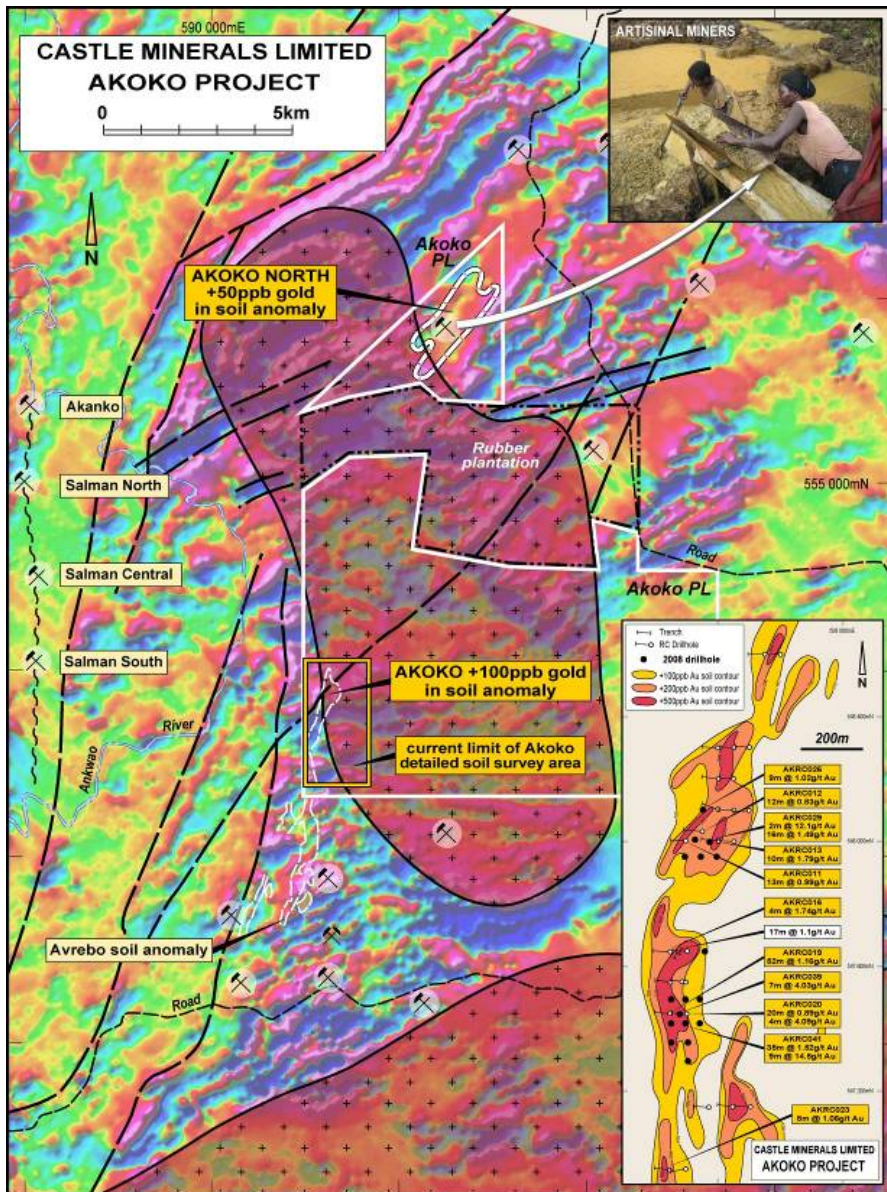
Near surface intercepts have obvious appeal...

Primary intercept of 11m @ 6.65g/t may represent sulphide system...

Numerous other anomalies require drill testing...

Excellent access...





Mineralisation intersected north of internal granite contact...

Ashanti gold belt...

10km north of Castle's Akoko mineralisation...

10km from Salman and 25km from Tarkwa gold deposits...

**Akoko Project
Geophysical image with soil geochemistry**

For further information please contact:

Michael Ivey
 Managing Director & CEO
 +618 9322 7018 or 0419 868 787

Information in this announcement that relates to Exploration Results is based on information compiled by Michael Fowler, Castle Minerals Limited Exploration Manager, who is a Member of The Australasian Institute of Mining and Metallurgy. Michael Fowler is a permanent employee of Castle Minerals Limited and has sufficient experience that is relevant to the style of mineralisation and type of deposit under consideration and to the activity which he is undertaking to qualify as a Competent Person as defined in the 2004 JORC Code. Michael Fowler consents to the inclusion in the announcement of the matters based on the information in the form and context in which it appears.

AKOKO NORTH RC DRILLING INTERCEPTS - ANRC01 to 20

Hole Number	Northing	Easting	mRL	Grid Az.	Dip	Hole Depth	Intercept
ANRC004	559,600	596017	119	90	-50	60	2m @ 2.66 g/t Au from 15m
ANRC006	559,803	596,019	119	90	-50	66	17m @ 2.29 g/t Au from 5m
ANRC007	559,802	596,060	117	90	-50	66	18m @ 2.17 g/t Au from 3m 10m @ 1.11 g/t Au from 42m
ANRC008	560,000	596,041	121	90	-50	60 <i>includes</i>	11m @ 6.65 g/t Au from 44m 1m @ 21.79 g/t from Au 50m
ANRC013	560,201	596,126	116	90	-50	72 and	30m @ 0.80 g/t Au from 40m* 10m @ 1.52 g/t Au from 40m* 5m @ 1.27 g/t Au from 65m*
ANRC017	560,400	596,060	84	90	-50	66	20m @ 0.62 g/t Au from 30m*
ANRC018	560,400	596,101	91	90	-50	66	20m @ 0.80 g/t Au from 30m*

Notes :

- Final assay results from reverse circulation drilling 1m riffle splits. *5m composite assays, 1m splits pending
- 3m maximum internal dilution, 1.0 g/t Au lower cut, no upper cut.
- All drill holes picked up by DGPS with accuracy of +/-10mm. UTM30N WGS84
- All drill holes were down hole surveyed for dip and azimuth at approximately 40m intervals down hole.
- Gold analyses performed using 50gm Fire Assay by Transworld Laboratories, Tarkwa, Ghana.
- Reference standards, duplicate and blank samples were routinely submitted and were within acceptable limits.