

Further Gold Discoveries at Julie West



- **New gold vein discovered at Julie West Project**
- **Four new quartz veins identified from mapping**
- **Julie West Vein extended to at least 1.2km strike**
- **Further drilling at Julie West intersects vein at depth**
- **Resource Calculations commenced**
- **Development options being considered**

New gold vein discovered at Julie West Project

Rockchip sampling along an outcropping quartz vein 1.4km south of the main Julie West vein reported surface grades up to 30 g/t gold. Five RC holes were drilled over two areas along this 1500m long vein with significant results including:

- 1m @ 7.47 g/t gold from 12m (JWRC 67)**
- 5m @ 5.12 g/t gold from 5m (JWRC 68)**
- 3m @ 2.33 g/t gold from 1m (JWRC 65)**
- 4m @ 1.48 g/t gold from 4m (JWRC 69)**

This successful first pass drill test provides excellent potential for more high grade gold mineralisation. At surface the vein is laminated and weakly pyritic and extends for at least 1500m. More extensive drill testing is a priority for this target and drilling is planned to recommence in April.

Four new quartz veins identified from mapping

At least four other gold veins within the project area have been identified that justify drill testing. The veins subcrop or outcrop at surface and/or are exposed in shallow workings. It is clear that a large number of veins are present in the district and it is likely that many more remain to be discovered. A comprehensive exploration program is being planned to adequately test these veins and the potential of the immediate area.

Further drilling at Julie West intersects vein at depth

Following the successful drill programs completed in December 2008 and February 2009 a further four holes were drilled to test the vein at depth. Three out of the four deeper holes intersected the Julie West vein and returned results including 6m @ 2.12g/t gold from 55m (JWRC 61) and 5m @ 0.90g/t gold from 75m (JWRC 62). The vein appears highly predictable downdip and displays excellent continuity. A three dimensional model is being created towards better understanding the relationship between structure and grade, particularly investigating the grade relationship with subtle changes in dip and strike orientation. With the vein now interpreted to be in excess of 1.2km long the depth potential is similarly prospective and upon completion of the 3D modelling further drilling is planned.

Julie West Vein Extended to 1.2km Strike

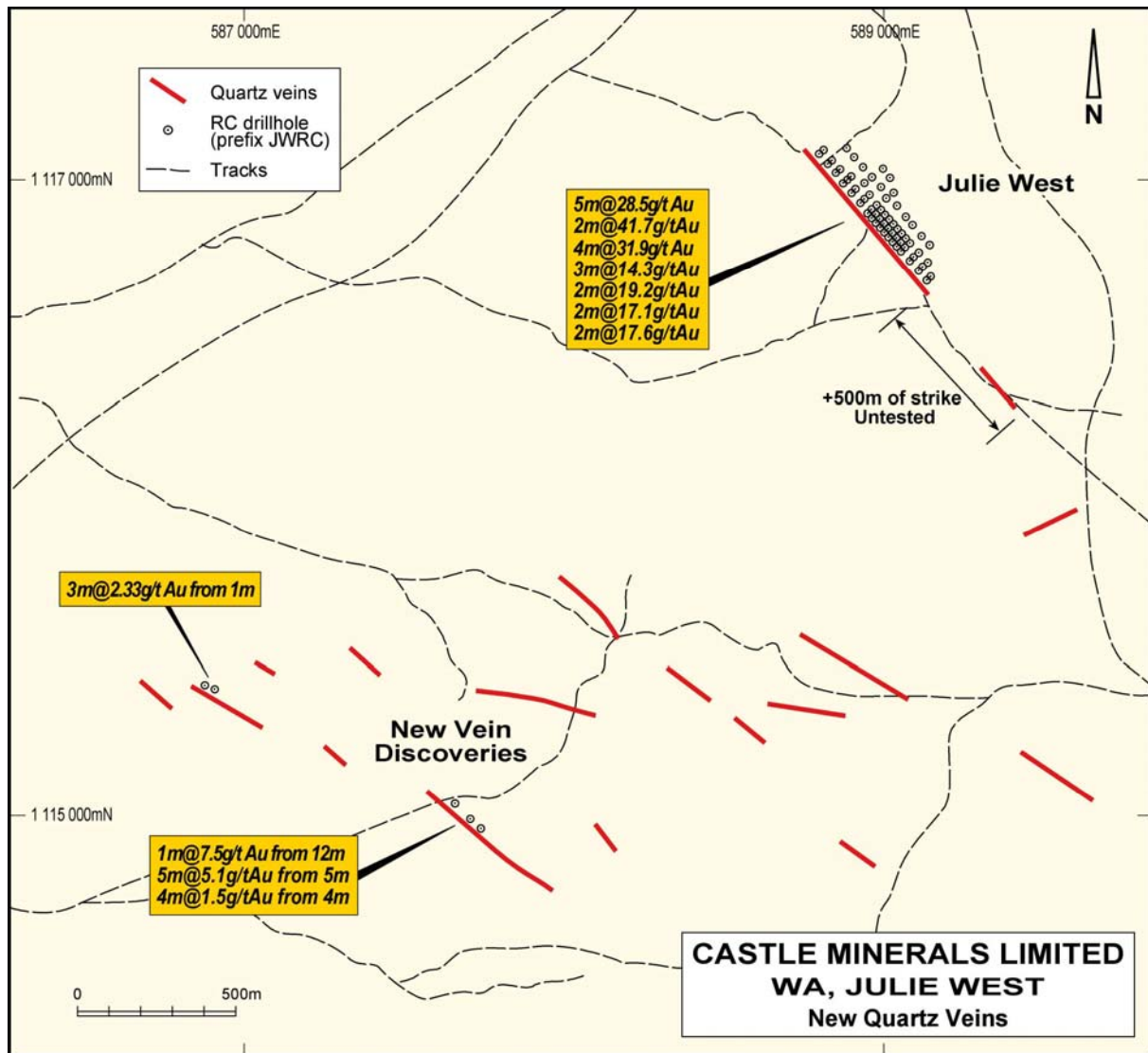
Field mapping has located the Julie West vein a further 500m south east where the vein is exposed over 2m wide in a shallow creek. The strike length of the vein is now at least 1.2 km long. The entire 1.2km strike warrants drill testing and has excellent potential to host a significant gold resource.

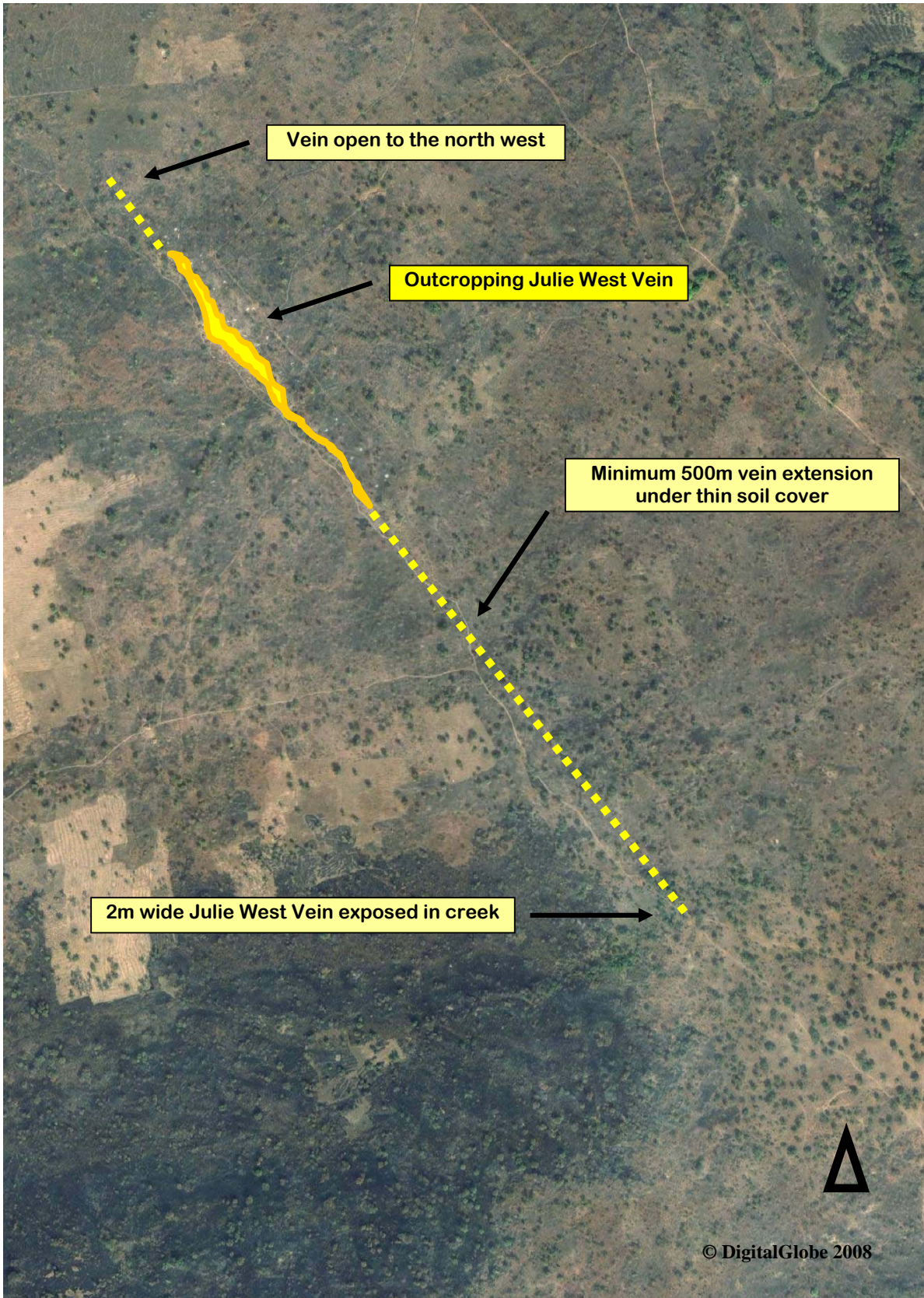
Resource Calculations

A resource calculation is currently being completed for the main Julie West vein and several development/processing options are being considered for the mineralisation identified to date. Metallurgical testwork on a sulphide and oxide samples are currently being undertaken at a Perth laboratory.

Possible development options for Julie West are being considered given the high grade and ease of mining the near surface deposit.

Castle Managing Director Mike Ivey said “these results are very significant. They confirm that the Julie West prospect is host to a large number of mineralised quartz veins that have good strike and depth extent and we feel confident that as exploration continues it is highly likely that more gold rich veins will be discovered and subsequent resources defined within the Project area.”

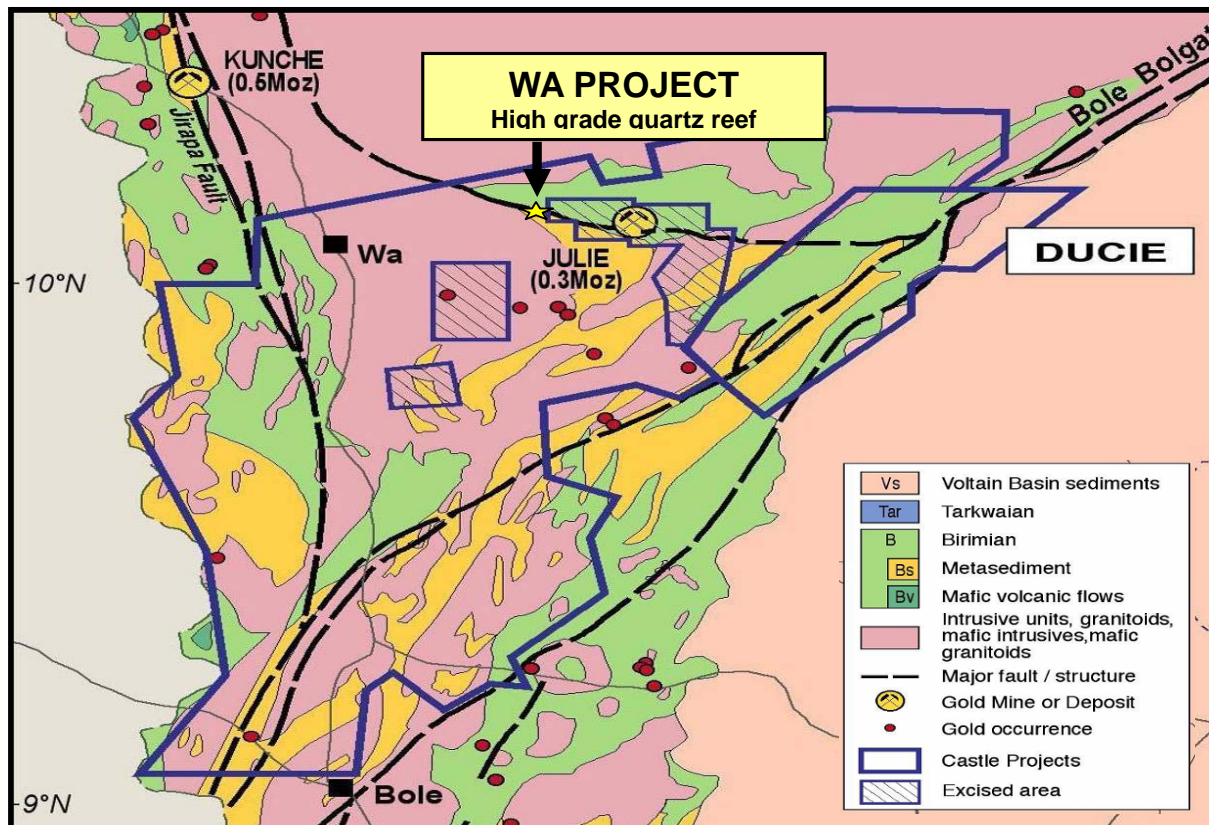




Julie West Prospect - Quickbird Image December 2008

Project Background

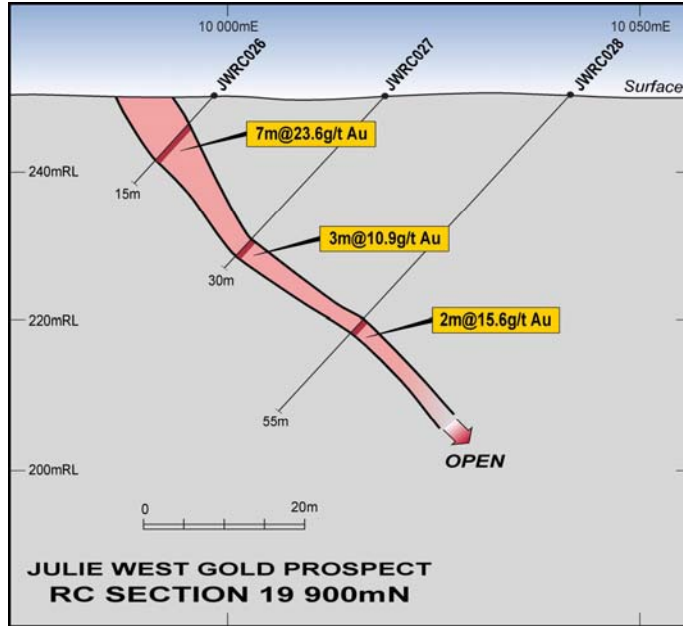
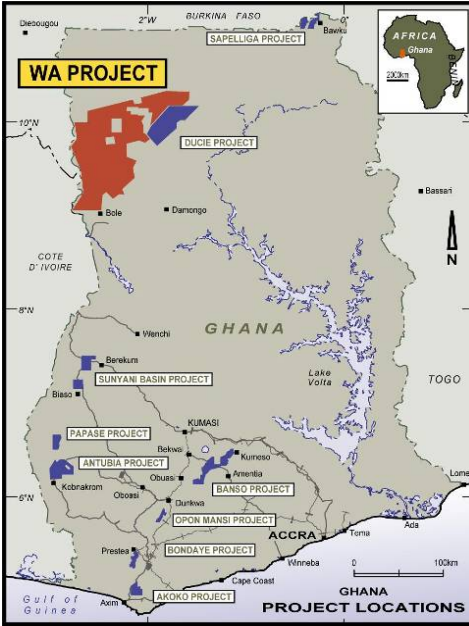
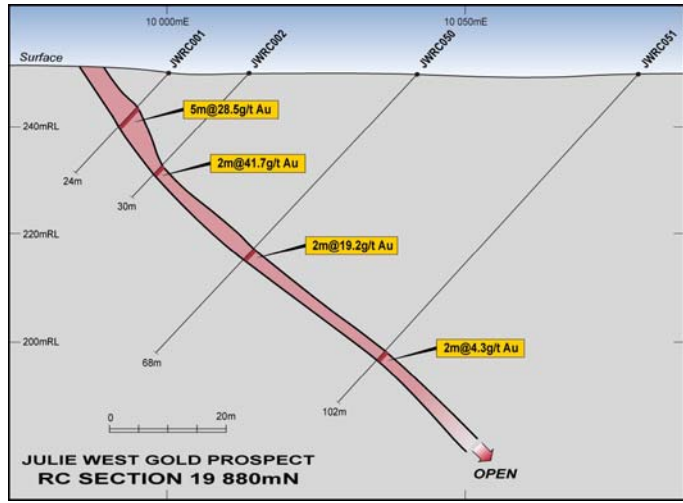
In November 2007 Castle signed an option agreement with Newmont Ghana Gold Limited (NGGL) to acquire a 100% interest in the 8,200 km² Wa project. An extensive sampling and mapping program was undertaken in February and March 2008. Several areas of anomalous geochemistry were identified with subsequent rock chip sampling and mapping highlighting the Julie West prospect. RC drilling was first conducted in November 2008 with high grade gold values reported from the Julie West quartz vein.



For further information please contact:

Michael Ivey
Managing Director & CEO
+618 9322 7018 or 0419 868 787

Information in this announcement that relates to Exploration Results is based on information compiled by Michael Fowler, Castle Minerals Limited Exploration Manager, who is a Member of The Australasian Institute of Mining and Metallurgy. Michael Fowler is a permanent employee of Castle Minerals Limited and has sufficient experience that is relevant to the style of mineralisation and type of deposit under consideration and to the activity which he is undertaking to qualify as a Competent Person as defined in the 2004 JORC Code. Michael Fowler consents to the inclusion in the announcement of the matters based on his information in the form and context in which it appears.



Julie West Reverse Circulation Drilling - Significant Intercepts

Grid: UTM
 Prospect: Julie West
 Project: Wa

Hole Number	Northing	Easting	mRL	Grid Az.	Dip	Hole Depth	Intercept
JWRC061	1116959	589032	269.698	230	-50	78	6m @ 2.12 ppm Au from 55m
JWRC062	1117006	589021	270.432	230	-50	90	5m @ 0.91 ppm Au from 73m
JWRC063	1116991	588944	271.288	230	-50	48	3m @ 2.38 ppm Au from 38m
JWRC064	1117036	588999	270.321	270	-50	90	2m @ 0.87 ppm Au from 80m
JWRC065	1115409	586875	273.976	230	-50	36	3m @ 2.33 ppm Au from 1m
JWRC066	1115398	586905	274.839	270	-50	30	2m @ 0.72 ppm Au from 0m
JWRC067	1115038	587658	288.2	230	-50	42	1m @ 7.47 ppm Au from 12m
JWRC068	1114989	587705	294.715	230	-50	25	5m @ 5.13 ppm Au from 5m
JWRC069	1114961	587736	298.02	230	-50	30	4m @ 1.48 ppm Au from 3m

Notes :

Final assay results from reverse circulation drilling 1m riffle splits.
 Maximum internal dilution 2m, 1.0g/t lower cut, no top cut
 Drill holes picked up by DGPS with accuracy of +/-10mm. UTM30N WGS84
 Gold analyses performed using 50gm Fire Assay by Transworld Laboratories, Tarkwa, Ghana.
 Reference standards, duplicate and blank samples were routinely submitted and were within acceptable limits.