

12th May 2008

Strong gold anomaly defined at Wa Project



Castle Minerals Limited (ASX:CDT) is pleased to advise that its first sampling program at the **Wa Project** (Castle right to earn 100% interest from Newmont Ghana Gold Limited) has identified a large number of gold in soil anomalies including a **strongly anomalous 2,000m long x 1000m wide area west of Crew Gold's 300,000 ounce Julie gold deposit.**

This area has reported **values up to 3,096 ppb gold (3.09g/t gold)** and is hosted by sedimentary rocks flanked by granites to the north and south.

The Julie gold deposit (5km to the east) is an east-west trending zone that dips 45 degrees to the north, with shear-hosted gold mineralization occurring along a granite/basalt contact. Crew Gold has reported an unclassified (inferred) resource of approximately 3.3 million tonnes for the top 30m of the Julie target, containing about 300,000 oz gold.

Castle Managing Director Mike Ivey said "the soil response in the north of Ghana is generally lower than in the more tropical soils found in the south so these high tenor results are particularly encouraging."

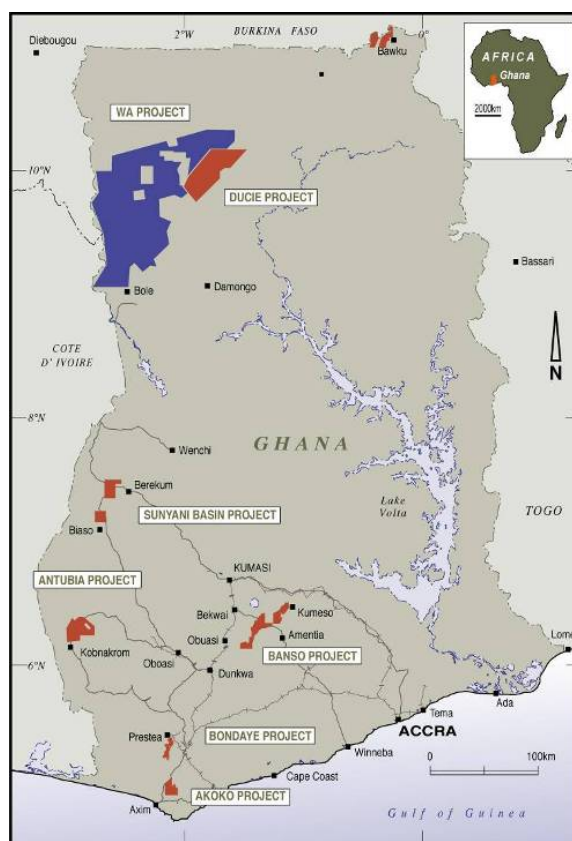
A detailed mapping and rock chip sampling program is currently underway at Wa.

Background

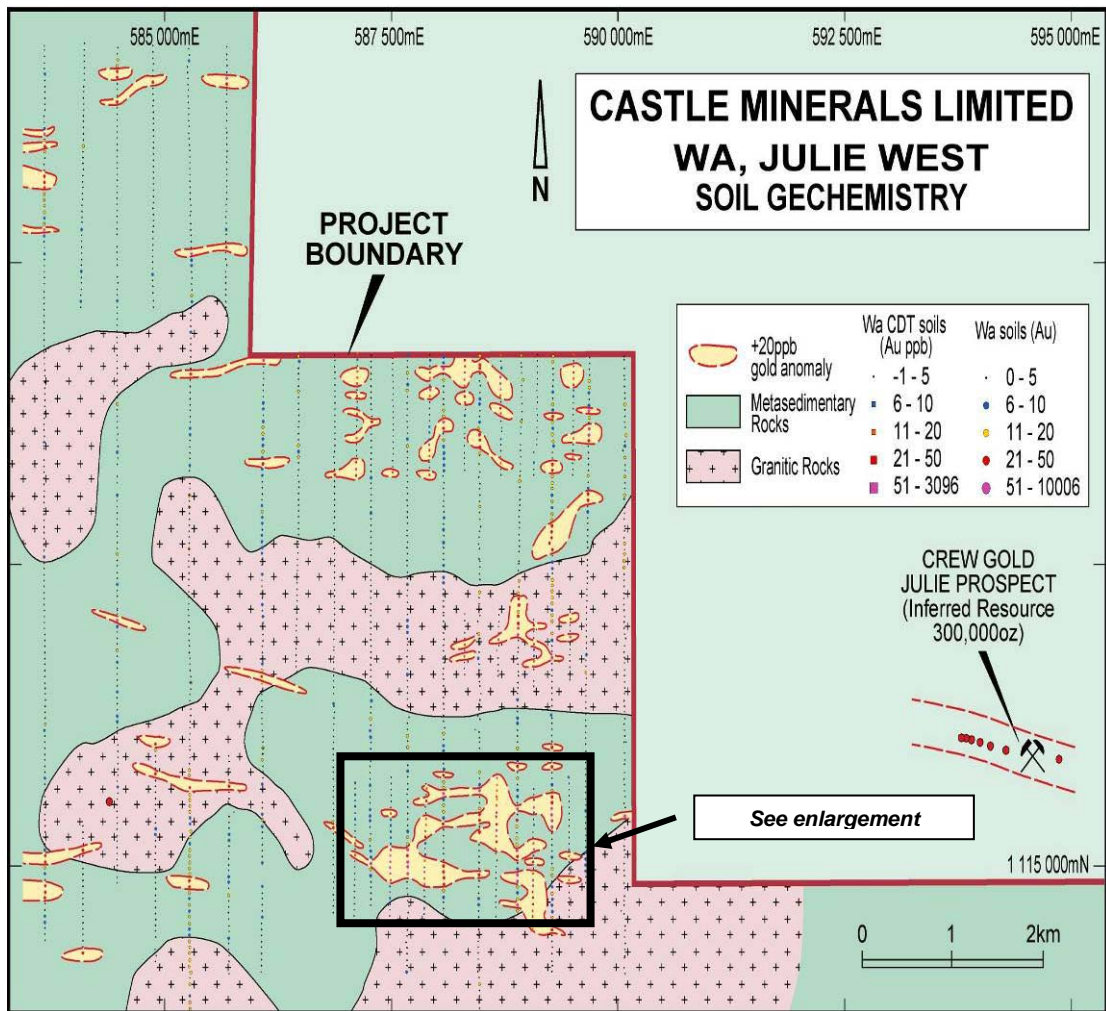
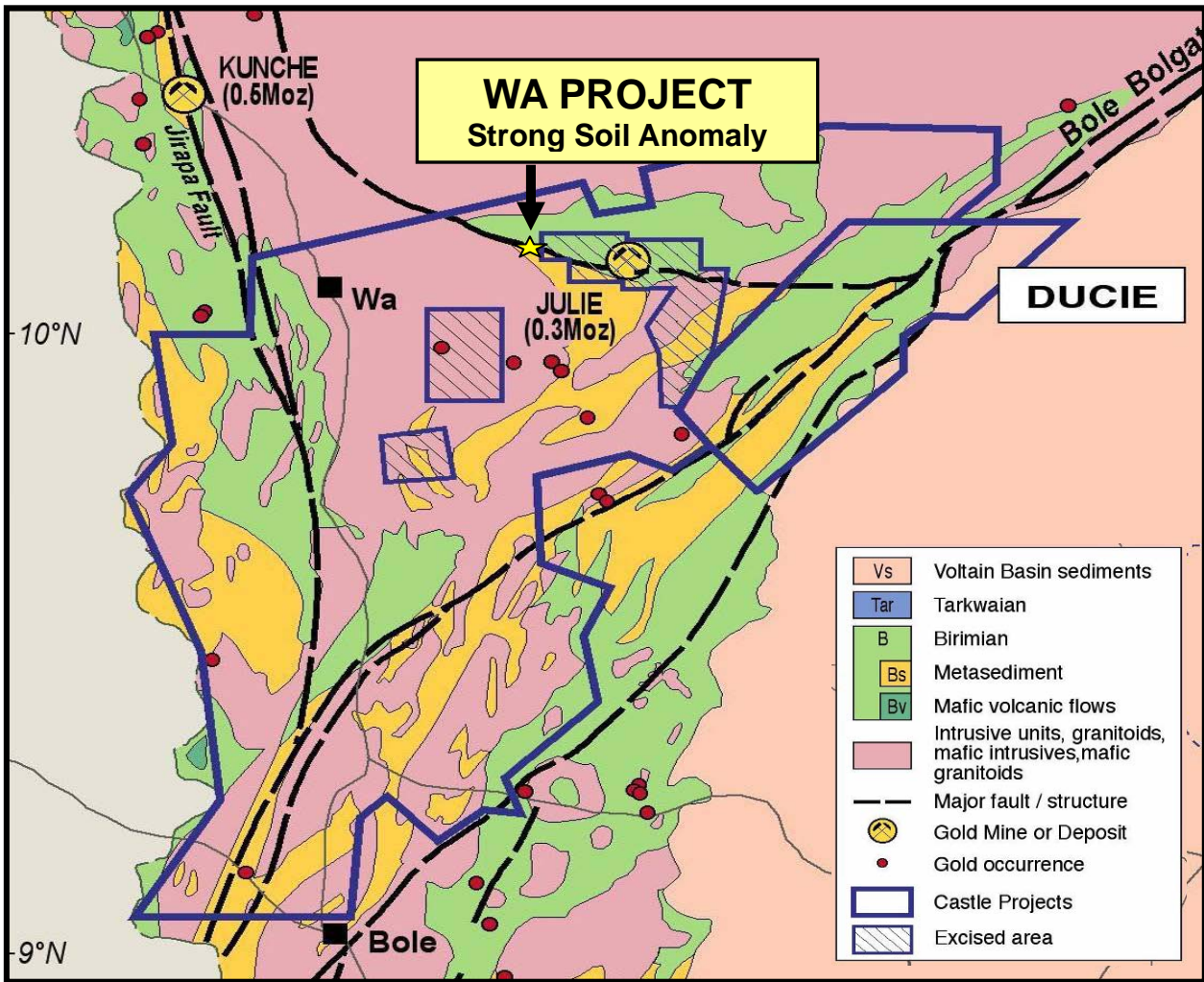
The 8,200 km² Wa project was acquired from Newmont Ghana Gold Limited (NGGL) in November 2007. An extensive sampling and mapping program was undertaken in February and March 2008 with 2,269 samples collected from a variety of areas.

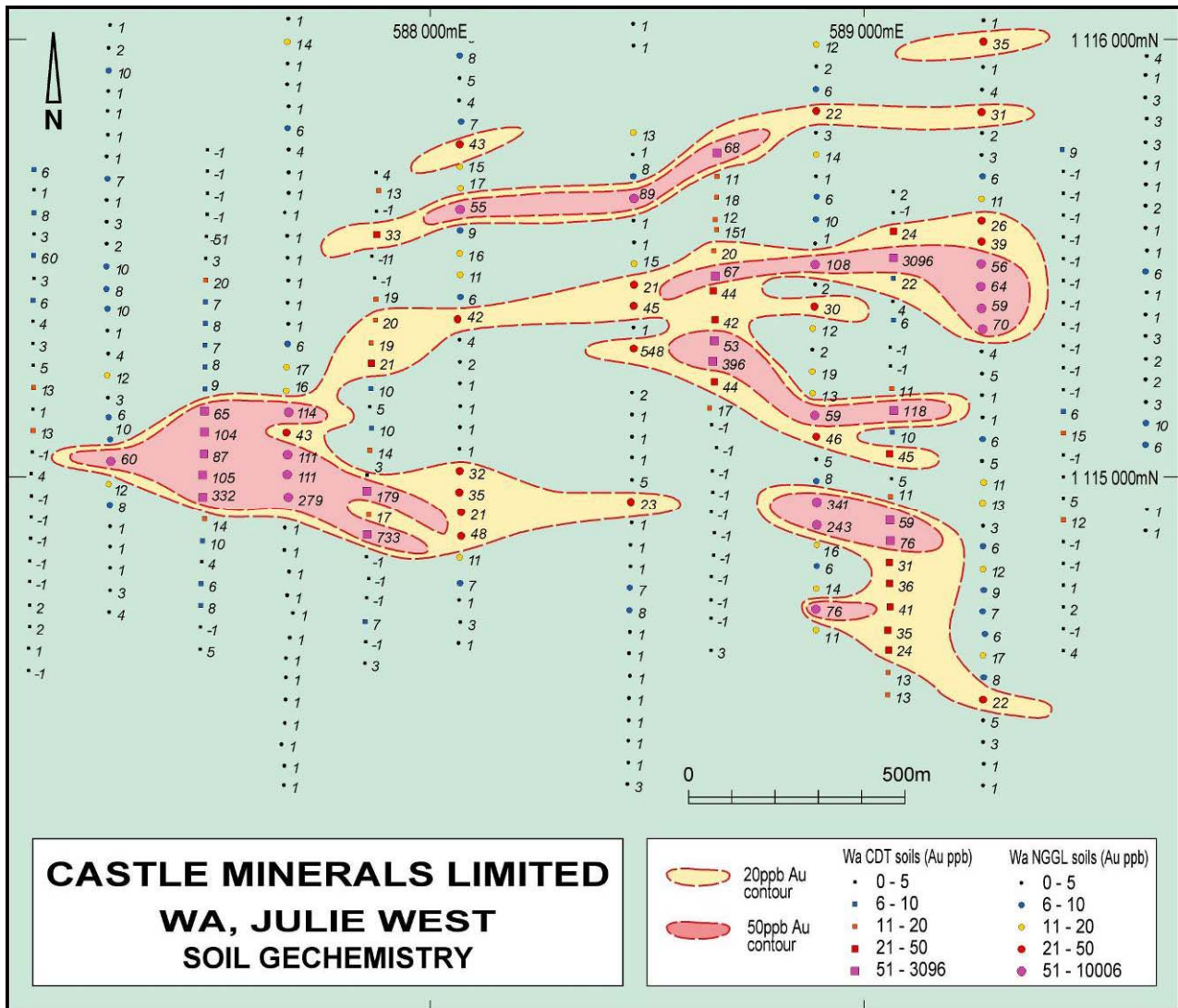


Quartz outcrop at the Wa project



CASTLE MINERALS LIMITED
GHANA
PROJECT LOCATIONS





Wa Project – strong gold in soil anomalism has been reported from the area west of the 300,000 ounce Julie gold deposit.

For further information please contact:

Michael Ivey
 Managing Director & CEO
 +618 9322 7018 or 0419 868 787

Information in this announcement that relates to Exploration Results is based on information compiled by Michael Fowler, Castle Minerals Limited Exploration Manager, who is a Member of The Australasian Institute of Mining and Metallurgy. Michael Fowler is a permanent employee of Castle Minerals Limited and has sufficient experience that is relevant to the style of mineralisation and type of deposit under consideration and to the activity which he is undertaking to qualify as a Competent Person as defined in the 2004 JORC Code. Michael Fowler consents to the inclusion in the announcement of the matters based on the information in the form and context in which it appears.