

Exploration Update



- ***Akoko North drilling to commence***
- ***Results awaited for 3,037 samples collected at Wa and Ducie projects***

Castle Minerals Limited (ASX:CDT) is pleased to provide details on current gold exploration activities in Ghana where field teams have achieved excellent progress during the first quarter of 2008:

Akoko Project

RC drilling is on schedule to commence this week at Akoko North where sampling has confirmed a strong 3km long surface gold anomaly.

Within the larger anomaly is a higher tenor (+250ppb gold) well defined zone 1.5km long with a peak value of 1090ppb gold. The northern half of this zone contains numerous historic prospecting pits and shafts over a +600m x 75m area. Five drill traverses on 200m spacings are initially proposed to test this target.

Wa Project

The 8,200 km² Wa project was acquired from Newmont Ghana Gold Limited (NGGL) in November 2007. An extensive sampling and mapping program was undertaken in February and March with 2,269 samples collected from a variety of areas including; the area immediately along strike from the 300,000 ounce Julie gold deposit and follow up sampling of stream sediment anomalies identified during Newmont's reconnaissance program. Results are expected over the next two weeks.

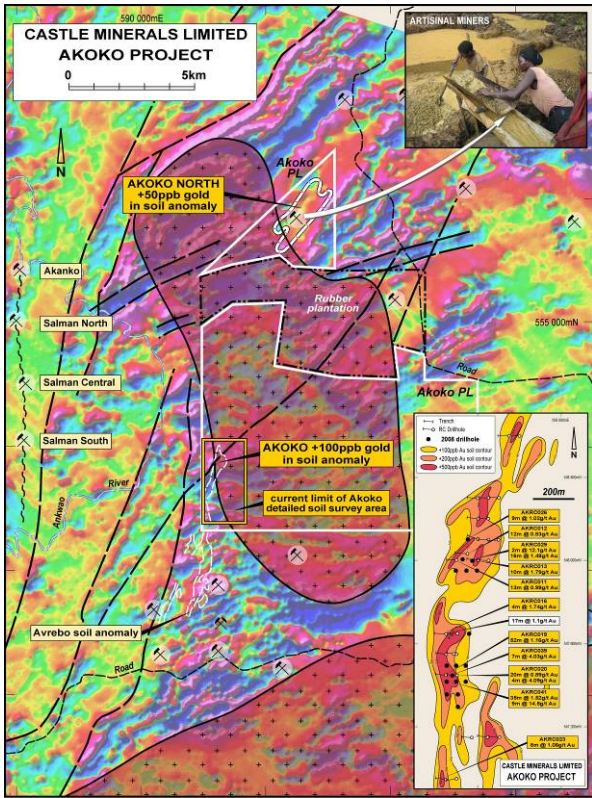
Active artisanal workings were identified in a number of areas within the Wa licence (refer attached photos).

Ducie Project

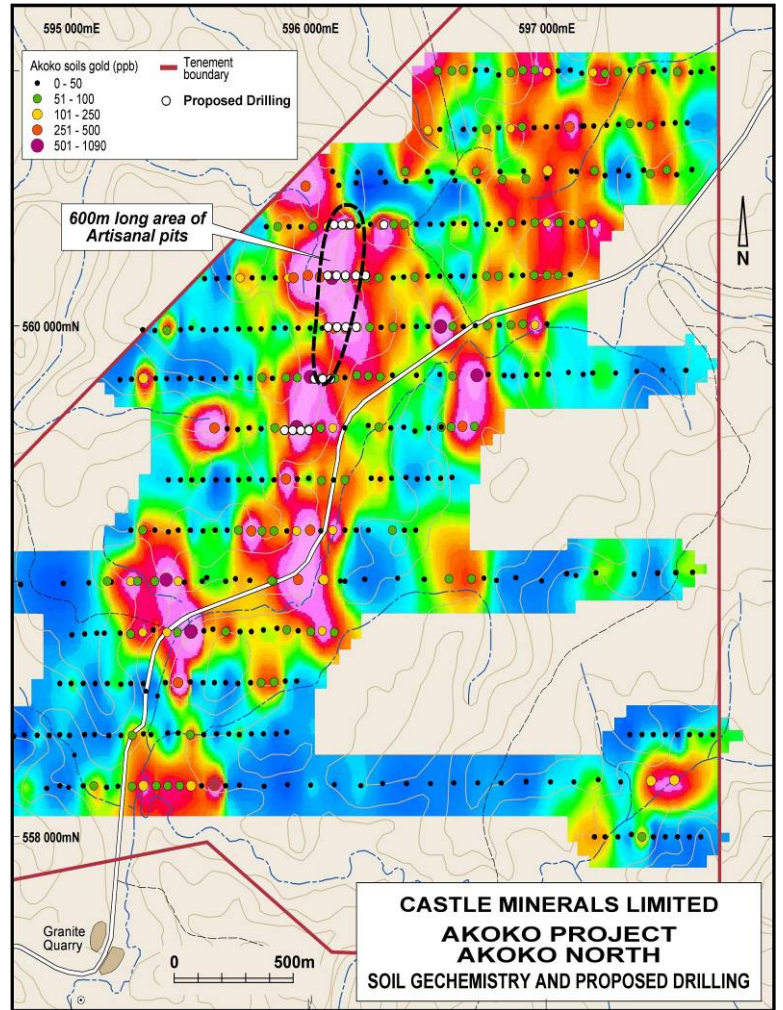
Sampling was carried out in January and February with a total 768 samples collected to follow up on the six regionally spaced traverses (three to ten km apart) that previously reported values up to 150 ppb gold. Results are expected over the next two weeks.

Other Projects

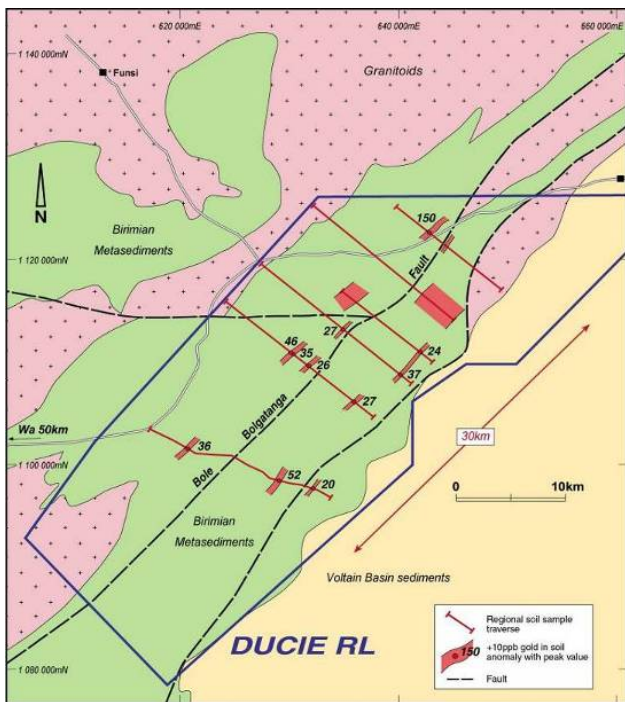
Castle continues to review opportunities within Ghana and West Africa .



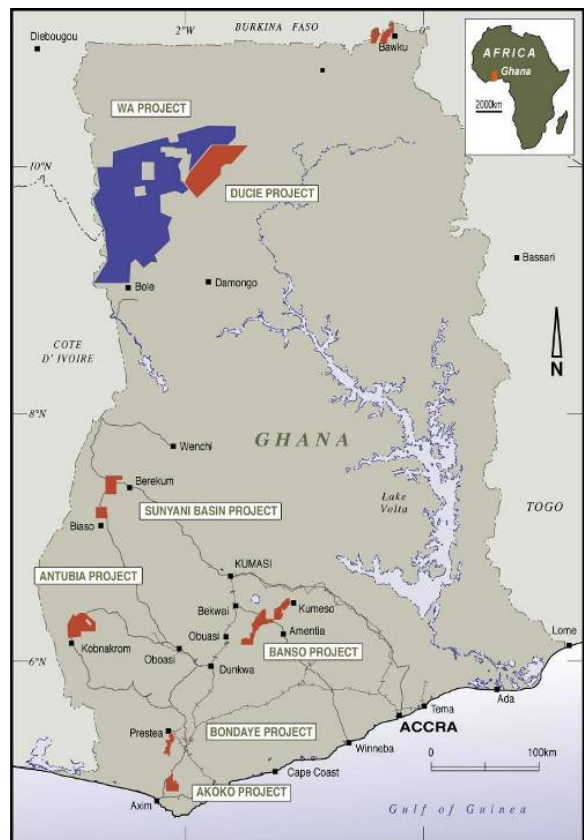
Akoko Gold Project - aeromagnetic image with geology, geochemistry and drill locations



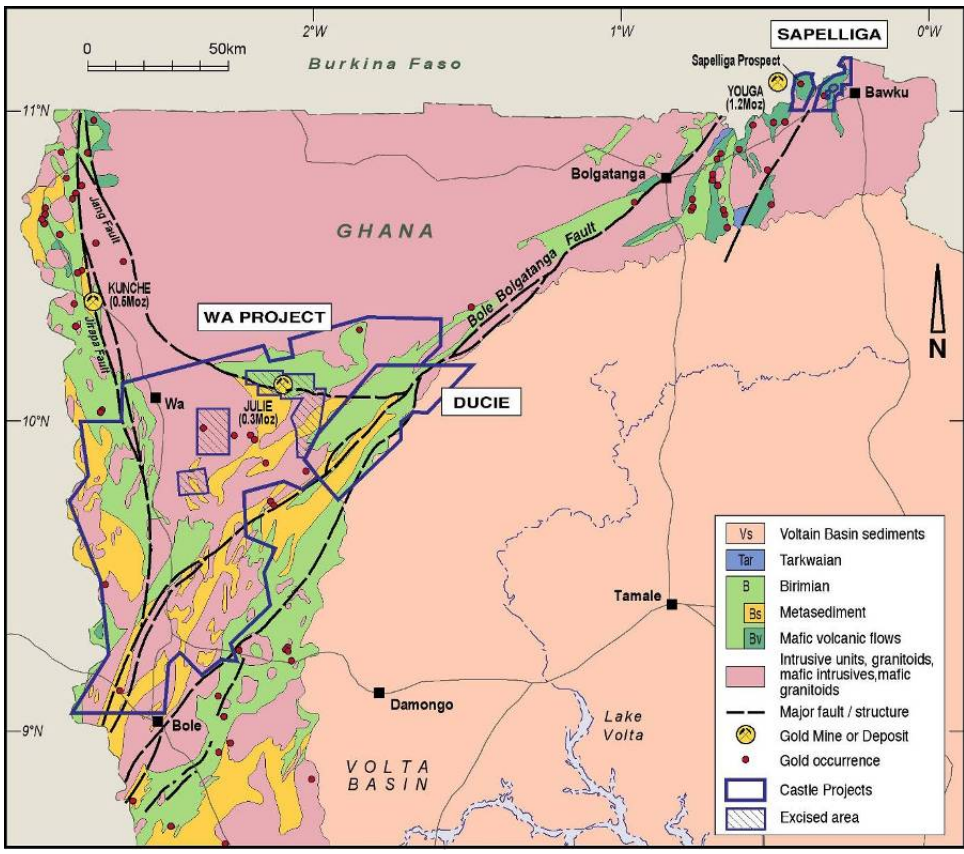
Akoko North soil geochemistry and proposed drilling



Ducie Project - regional geology with soil traverses and anomalies



CASTLE MINERALS LIMITED GHANA PROJECT LOCATIONS



Wa and Ducie Projects - regional geology and project locations in north west Ghana



Wa Project - active artisanal miners

For further information please contact: **Michael Ivey**
Managing Director & CEO
+618 9322 7018 or 0419 868 787

Information in this announcement that relates to Exploration Results is based on information compiled by Michael Fowler, Castle Minerals Limited Exploration Manager, who is a Member of The Australasian Institute of Mining and Metallurgy. Michael Fowler is a permanent employee of Castle Minerals Limited and has sufficient experience that is relevant to the style of mineralisation and type of deposit under consideration and to the activity which he is undertaking to qualify as a Competent Person as defined in the 2004 JORC Code. Michael Fowler consents to the inclusion in the announcement of the matters based on the information in the form and context in which it appears.